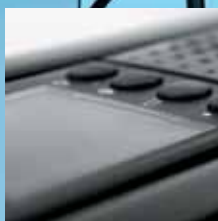


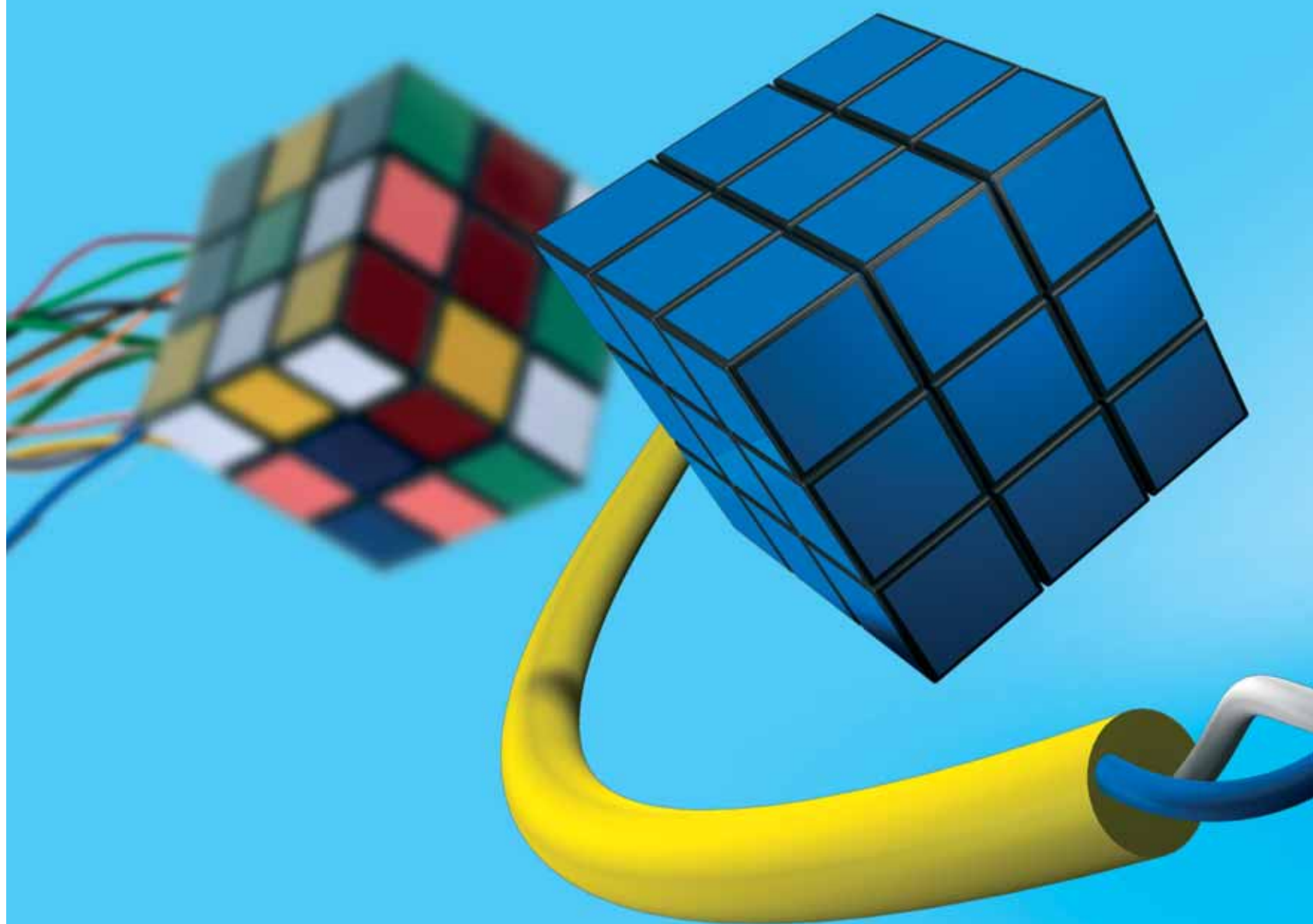
Two-wire video entry system with self-learning.  
Power supply included.



Video entry system X1

bpt

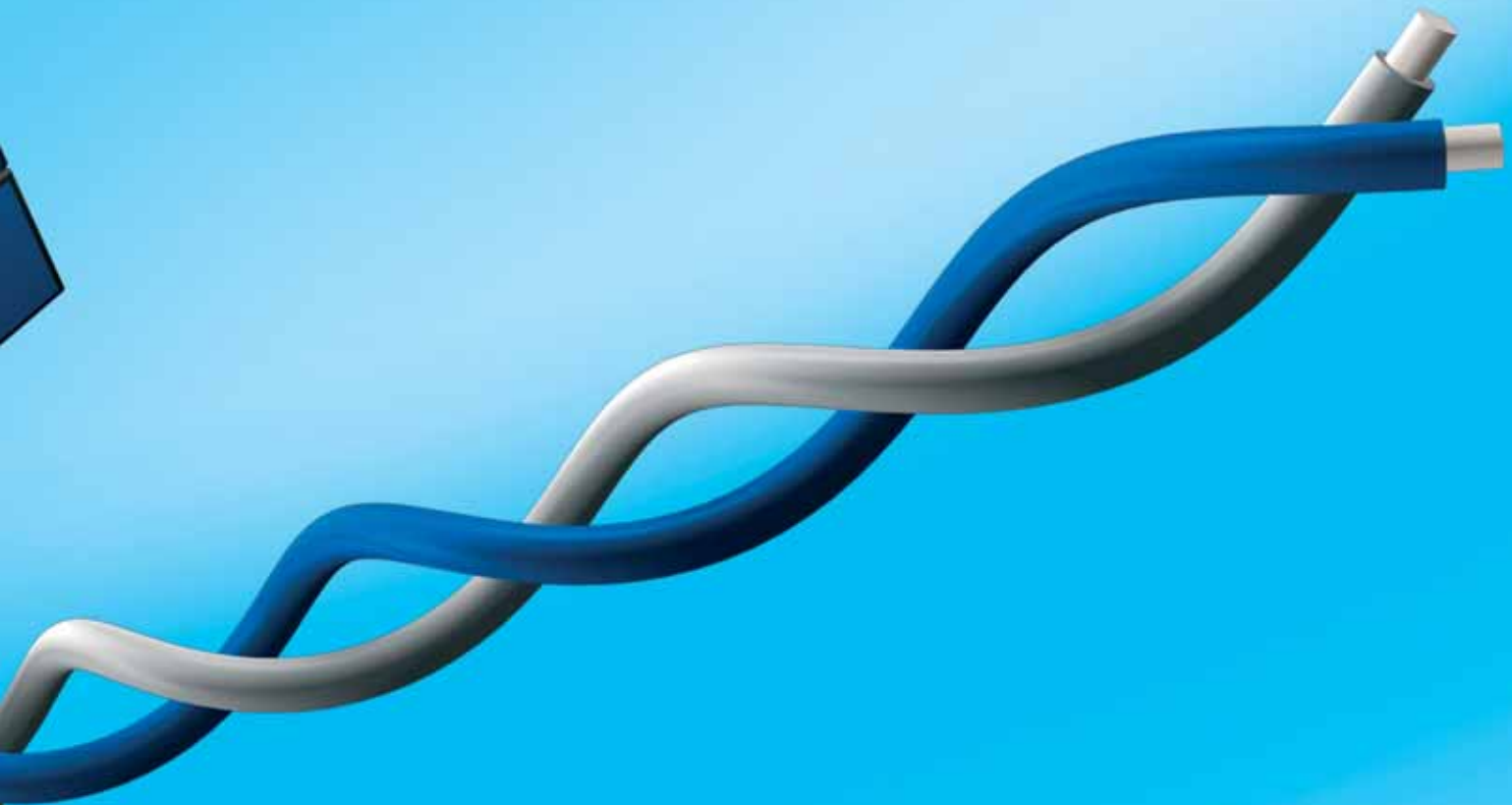
# X1 Introducing X1, the 2-wire video entry control system



X1 inherits a great technological tradition and an astounding wealth of features.

**Just two non-polarized wires, power supply included,**  
installation is simpler,  
quicker and more immediate.

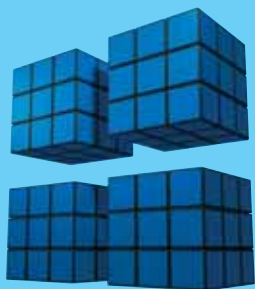
## **X1: ANOTHER STEP FORWARDS TOWARDS PERFECTION**





# **X1** Incredibly advanced, simpler than ever

## Technology



### **The X1 system**

The X1 handles 4 entrances, 100 calls, covers a distance of 650 meters between an external entry panel and the last receiver and can connect as many as 8 receivers on the same call.



### **The Residential X1**

The X1 can expand its capacity so as to form multi-block residential complexes of up to 2,000 users in all.



### **Self-learning programming**

With X1, system programming is quick and immediate with no configurers or dip switches to contend with.



### **B&W and colour video signal**

X1 provides top audio-video quality and can handle B&W and COLOUR signals without distinction. Again with just 2 wires, power supply included.



## Functionality

### Intercom features

With X1 you can create one or more intercom groups of receivers without having to alter the riser line. It can handle several 8-intercom groups.



### Full optional

- Doorbell
- Door lock release feature
- Call waiting notification
- Door lock release time control
- Secrecy of speech
- Self-connection to entry panels
- System busy warning



### X1-300 expandability

X1 can be expanded to cater for the multi-block residential complexes, with the aid of an XA/300LR control unit



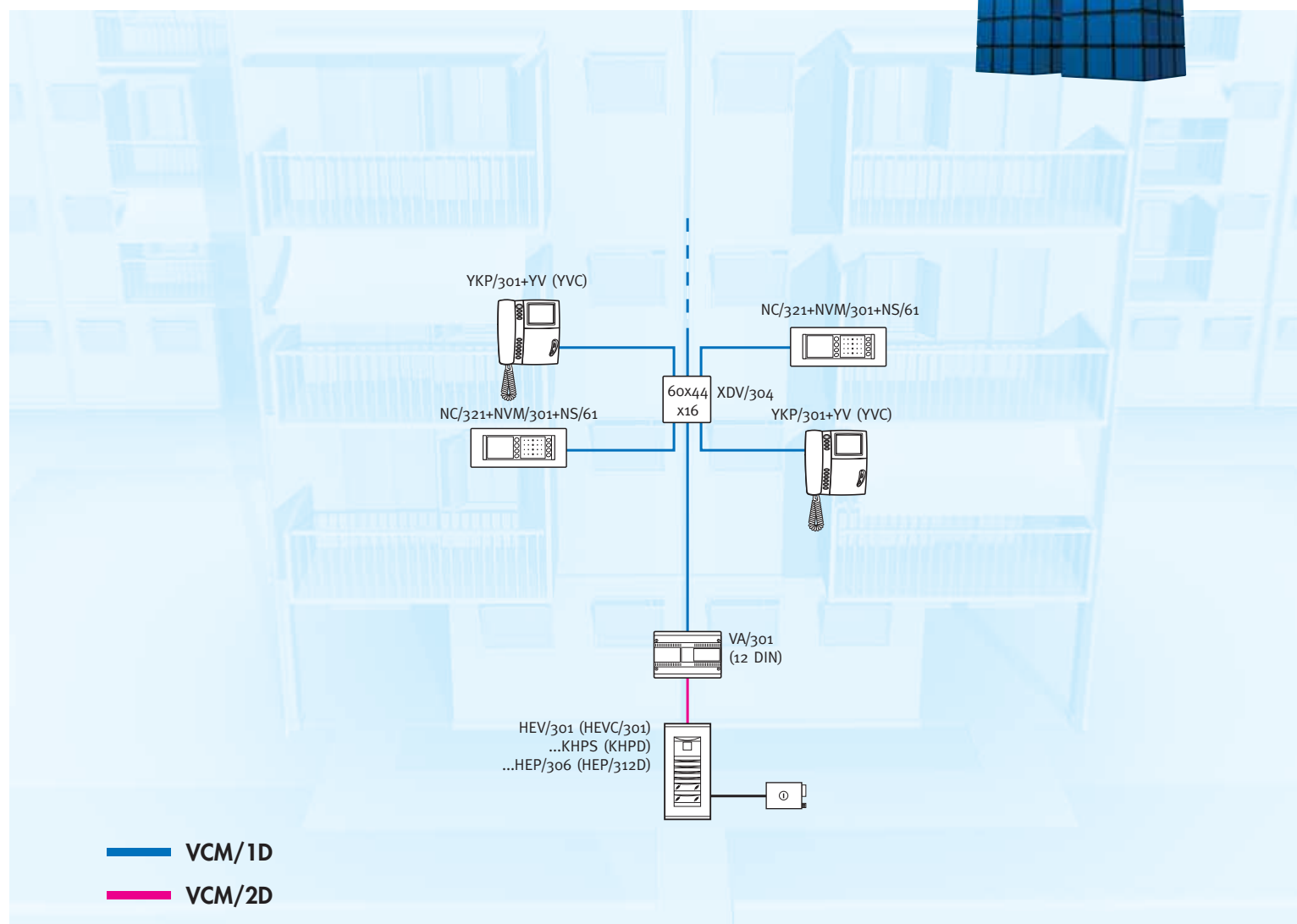
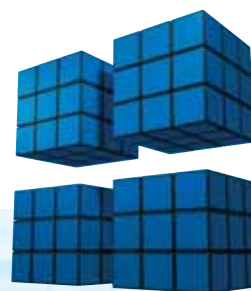
### Expandable kits

The X1 system kits can be used to expand the video entry control installation by simply adding the necessary pushbutton entry panels and receivers.



# X1 system capacity

Video entry installation with 1 entry panel  
with traditional buttons and one video riser.



System composition	
Article*	Quantity
YV (YVC)	2-n
YKP/301	2-n
NVM/301	2-n
NC/321	2-n
NS/61	2-n
XDV/300A*	0-2
XDV/304	1-n
VA/301	1
HEV/301 (HEVC/301)	1
KHPS	0-1
HEP/306	0-n
KHPD	0-n
HEP/312D	0-n

\* to be installed after 10 XDV/304.

\*\* See page 21 for items description

## System X1

**100** Internal receivers in total

**4** Entry panels

**650m** Maximum distance between external entry panels and last receiver

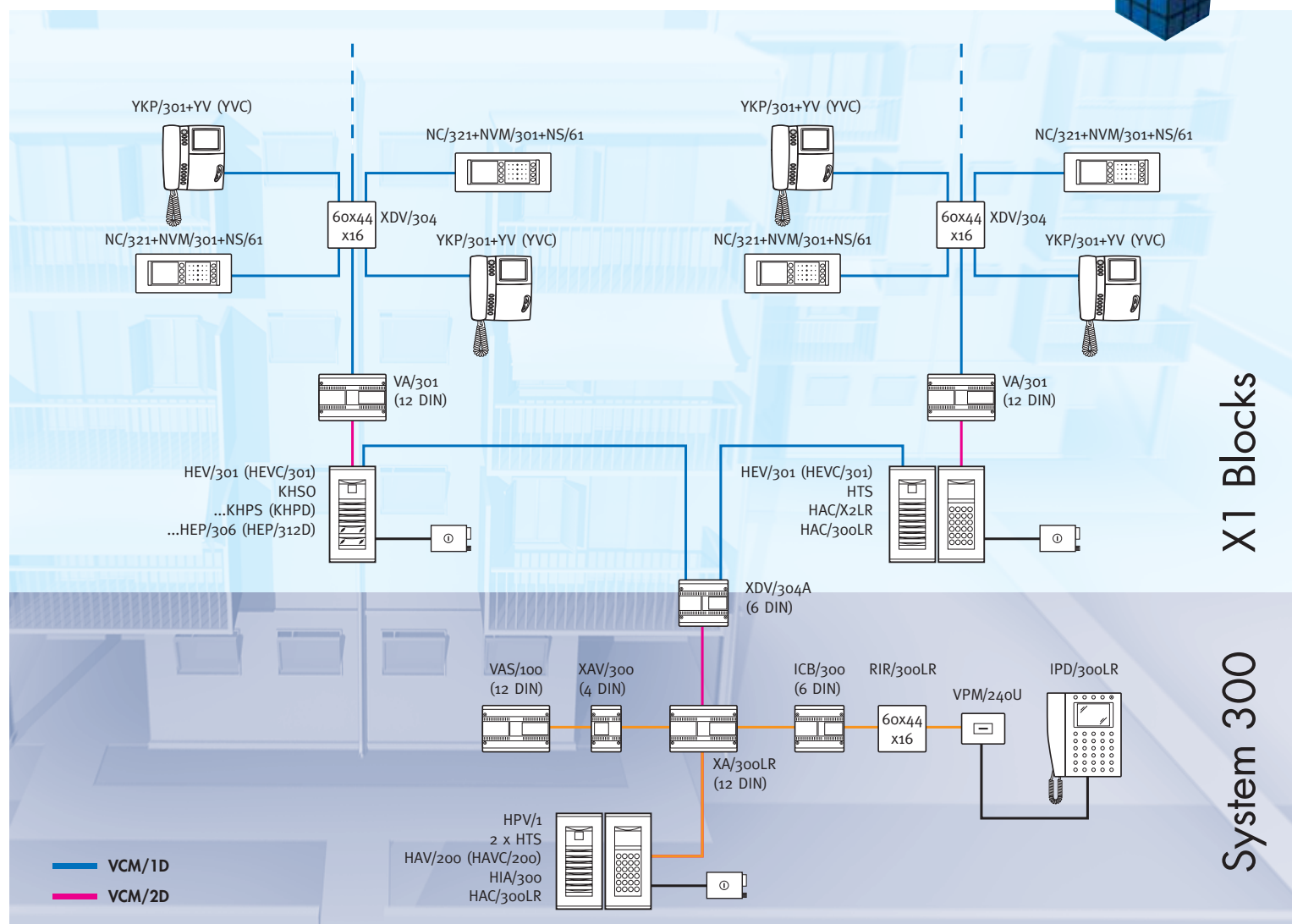
**VA/301** One power supply unit can handle up to 64/100 internal receivers\*\*\*

\*\*\* Adding the power supply XAS/301

# System expansion



Video entry installation with 1 main digital entry panel, 1 porter switchboard, 1 traditional entry panel, and 1 digital entry panel for 2 X1 video entry control risers - intercommunicating between users on the same riser is possible by adapting the system accordingly.



## Residential X1

**2000** Internal receivers in all

**100** Internal receivers per block

**256** Secondary entry panels

**64** Main entry panels with porter

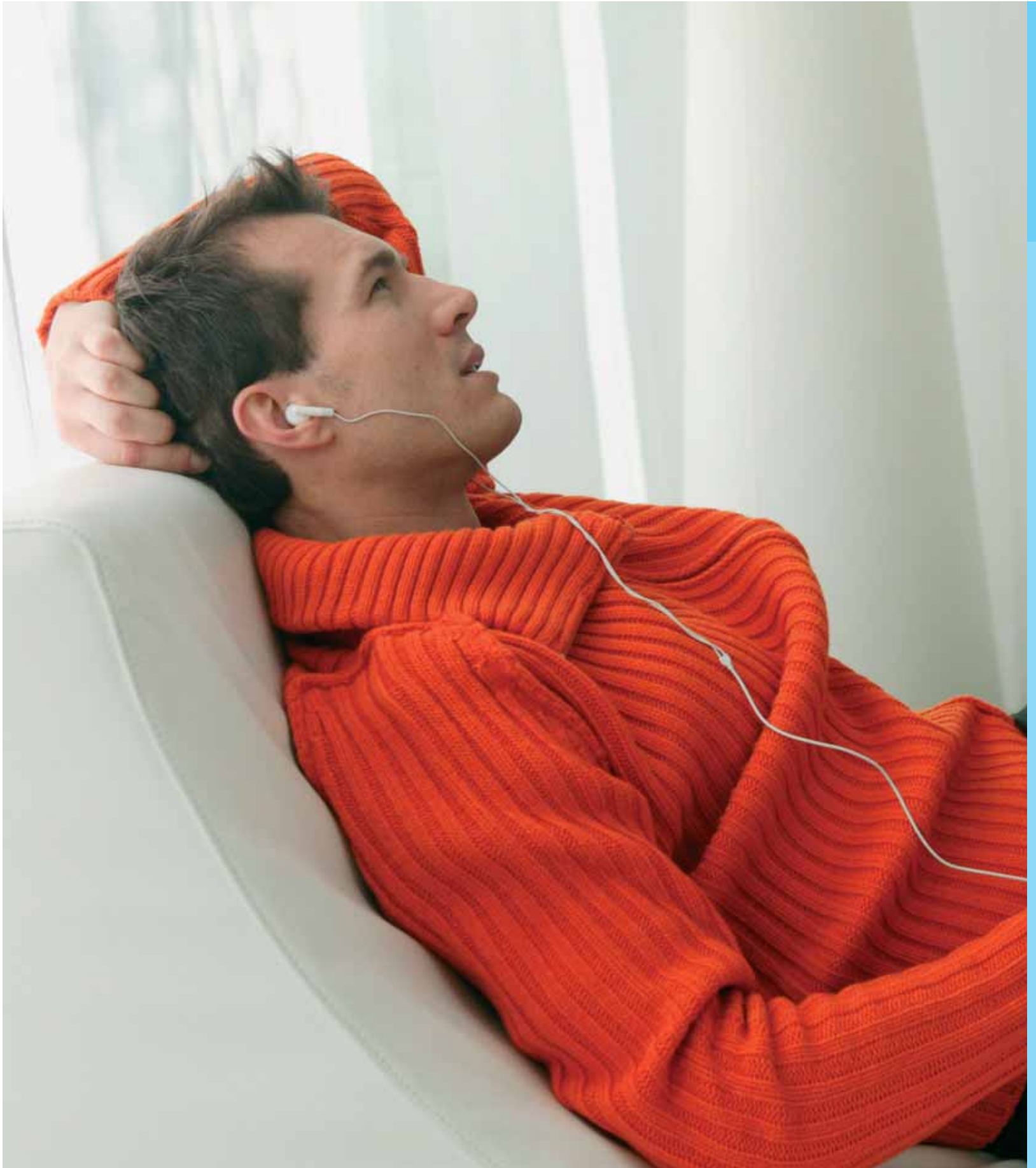
## System composition

Article*	Quantity
XDV/304A	1
XA/300LR	1
XAV/300	1
ICB/300	1
RIR/300LR	1
VAS/100	1
VPM/240U	1
IPD/300LR	1
HPV/1	1
HTS	2
HAV/200 (HAVC/200)	1
HIA/300	1
HAC/300LR	1

\*See page 21 for items description



## X1 Self-learning programming





# X1 is a quick learner and never makes mistakes



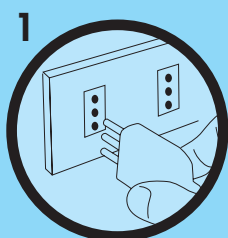
Programming of calls from the entry panel to receivers, carried out with the Bpt self-learning system, is quick and error-proof. This operation, which requires no setting or configuring of dip switches or configurers, is carried out with

the system working by sending the call from the entry panel to the relevant receiver directly.

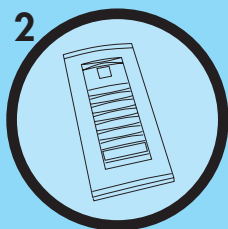
## Entry panel and call programming process:

Inside each audio-video or audio-only entry panel, there are two programming jumpers:

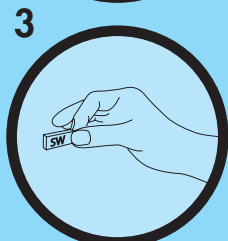
**SW1 = Entry panel detection - SW2 = Call programming**



Switch on the system;



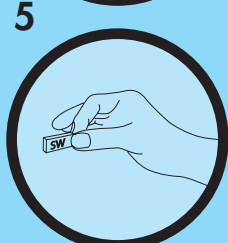
Go to the last entry panel, i.e. the last of the series in installations with more than one entrance, or the only entry panel if you have an installation with just one entrance.



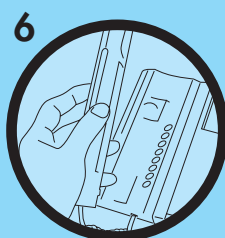
Remove jumper SW1;



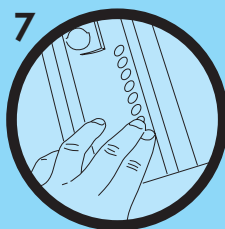
Wait for audible confirmation;  
Refit jumper SW1;;



Remove jumper SW2;



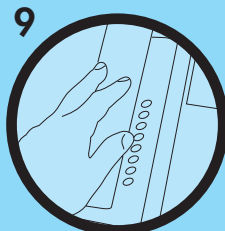
Lift the receiver on the first internal unit you want to program;



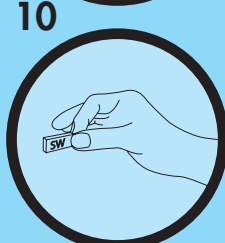
Press the door lock release and auxiliary buttons on the unit at the same time, holding them down until you receive the audible feedback confirming that the operation is complete and the audio connection to the entry panel is activated.



On the entry panel, press the call button you want to associate with the receiver.



Hang up;  
Repeat the procedure from point 7 on all remaining receivers;



Refit jumper SW2 to exit programming.

## X1 B/W and colour video signal



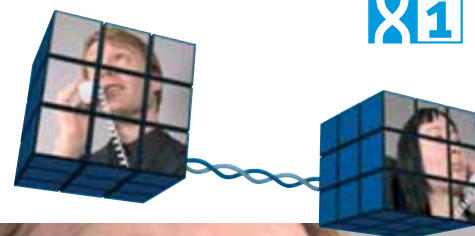
X1 provides high resolution for all colours.  
Black and white included.

X1 provides top audio-video quality and  
can handle B&W and colour signals without  
distinction. Again with just 2 wires, power  
supply included.



# Intercom feature

X1



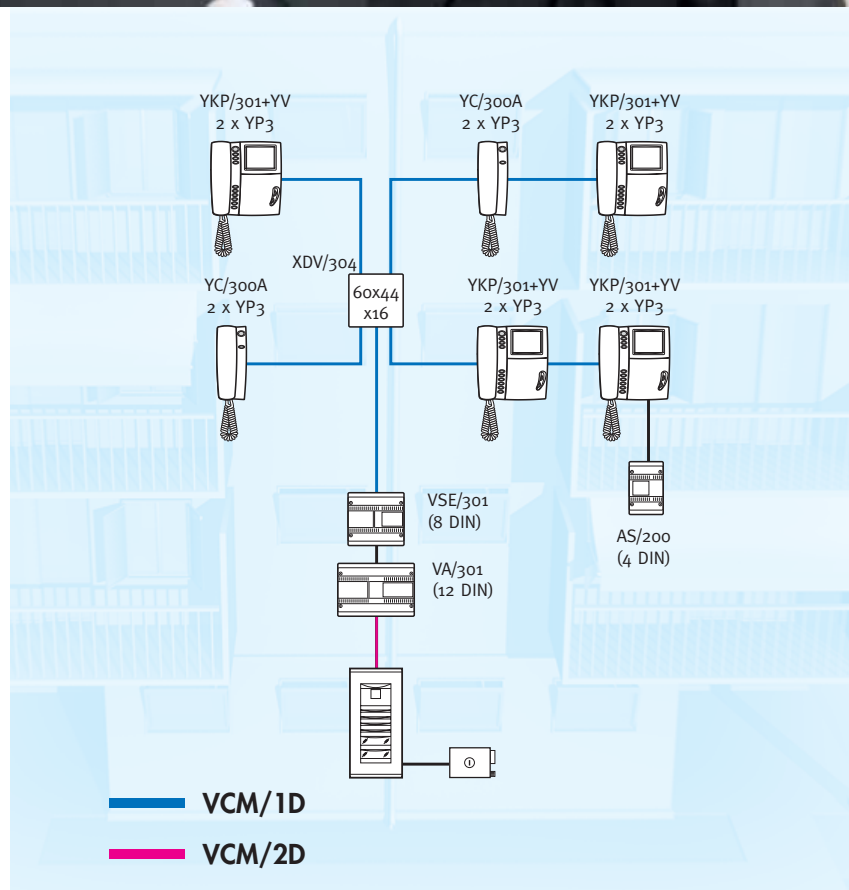
X1 lets everyone have their say and can keep a secret.

With the special 8 DIN VSE/301 selector with built-in power supply, you can create one or more groups of intercom receivers without making alterations to the riser line and without making the rest of the system busy. With the LYNEA-series receivers and the new OPHERA monitor, you can manage groups of 6 or 8 intercom receivers.

## Programming for intercom receivers

- A - Set the VSE/301 selector for intercom units to programming mode by removing jumper SW1;
- B - Go to the receiver you want to program and press the call button you want to call it with;
- C - Repeat the procedure in point B for all the other receivers;
- D - Exit programming by refitting jumper SW1 on the VSE/301 unit.

*NOTE: program calls to the receivers before programming the VSE/301 unit.*





# X1 comes with many extras

The system gives you all the standard features without adding accessories and without altering the riser.



## X1 gives you the following features without adding accessories:

Secrecy of speech	Doorbell
Door lock release	Call waiting notification
Auxiliary services	Door lock release time control
Self-connection to entry panels	Busy system warning

### Self-connection to entry panels

Since 4 video entry panels can be connected in series, you can use the monitor's self-connect feature to monitor all the entrances connected, switching between them in sequence, and activate the solenoid door lock release command and auxiliary services corresponding to the entrance selected each time, assuring unbeatable security

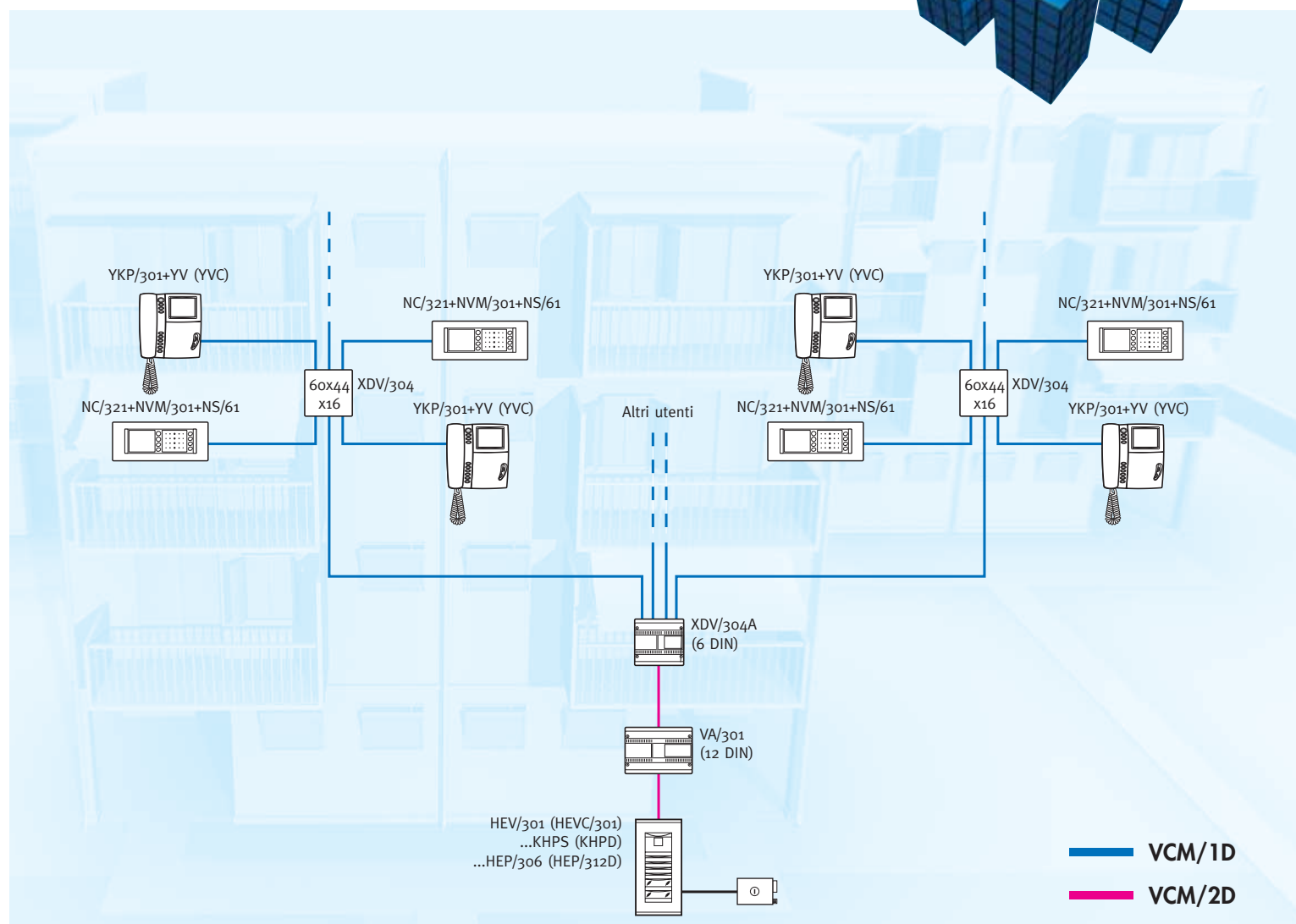
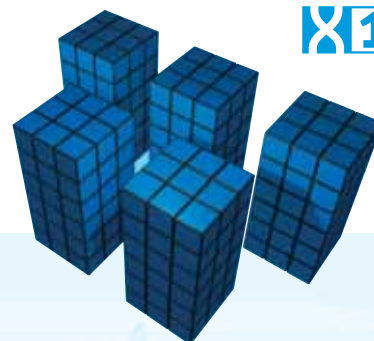
### Doorbell

With no need for special bells or additional wires, you can have a different doorbell note to distinguish it from the entry panel call.

# Distribution over a number of risers



Video entry installation with 1 entry panel with traditional buttons and 4 video risers.



System composition	
Article**	Quantity
YV (YVC)	4-n
YKP/301	4-n
NVM/301	4-n
NC/321	4-n
NS/61	4-n
XDV/304	2-n
XDV/300A*	0-2
XDV/304A	1
VA/301	1
HEV/301 (HEVC/301)	1
KHPS	0-1
HEP/306	0-n
KHPD	0-n
HEP/312D	0-n

\* to be installed after 10 XDV/304.

\*\* See page 21 for items description

## Distribution over a number of risers

If the signal has to be distributed over a number of risers, you need to use the amplified distributor XDV/304A (max. 30 XDV/304 + XDV/304A per system) expandable as illustrated.

## X1 Bpt single-house kits





# Unrivalled simplicity, limitless expandability.



With the X1 kits, it doesn't matter whether you want to install an audio-video entry control system in a detached house or a multi-fl at complex. The kits, made up of a Targha-series entry panel, VA/301 power supply unit and Lynea- or Nova-series receivers, allow for system expansion by just adding as many pushbutton panels and receivers as the system requires.



CODE	DESCRIPTION	KIT CONTENTS
<b>NOVAKIT/00</b> <b>6262-0800</b>	GREY NOVA-SERIES COLOUR MONITOR VIDEO ENTRY CONTROL KIT	<ul style="list-style-type: none"> <li>- twin-channel audio module NC/321 GR</li> <li>- monitor module NVM/301 GR</li> <li>- recessed entry panel HEVC/301GH</li> <li>- 6-module recessed box NSI/6M</li> <li>- frame NS/61</li> <li>- grey thermoplastic cover plat NPT/6V GR</li> <li>- power supply unit VA/301</li> <li>- single KHPS extra push button</li> </ul>
<b>NOVAKIT/01</b> <b>6262-1000</b>	GREY NOVA-SERIES B/W MONITOR VIDEO ENTRY CONTROL KIT	<ul style="list-style-type: none"> <li>- twin-channel audio module NC/321 GR</li> <li>- monitor module NVM/301 GR</li> <li>- recessed entry panel HEV/301GH</li> <li>- 6-module recessed box NSI/6M</li> <li>- frame NS/61</li> <li>- grey thermoplastic cover plat NPT/6V GR</li> <li>- power supply unit VA/301</li> <li>- single KHPS extra push button</li> </ul>
<b>NOVAKIT/02</b> <b>6262-0700</b>	WHITE NOVA-SERIES COLOUR MONITOR VIDEO ENTRY CONTROL KIT	<ul style="list-style-type: none"> <li>- twin-channel audio module NC/321 BB</li> <li>- monitor module NVM/301 BB</li> <li>- recessed entry panel HEVC/301GH</li> <li>- 6-module recessed box NSI/6M</li> <li>- frame NS/61</li> <li>- grey thermoplastic cover plat NPT/6V GR</li> <li>- power supply unit VA/301</li> <li>- single KHPS extra push button</li> </ul>
<b>NOVAKIT/03</b> <b>6262-0900</b>	WHITE NOVA-SERIES B/W MONITOR VIDEO ENTRY CONTROL KIT	<ul style="list-style-type: none"> <li>- twin-channel audio module NC/321 BB</li> <li>- monitor module NVM/301 BB</li> <li>- recessed entry panel HEV/301GH</li> <li>- 6-module recessed box NSI/6M</li> <li>- frame NS/61</li> <li>- grey thermoplastic cover plat NPT/6V GR</li> <li>- power supply unit VA/301</li> <li>- single KHPS extra push button</li> </ul>



CODE	DESCRIPTION	KIT CONTENTS
<b>OPHERAKIT/00</b> <b>6262-1100</b>	OPHERA SERIES 3.5" COLOUR MONITOR VIDEO ENTRY CONTROL KIT	<ul style="list-style-type: none"> <li>- Ophera monitor module</li> <li>- HEVC/301GH recessed entry panel</li> <li>- VA301 power supply unit</li> <li>- single KHPS extra push button</li> </ul>
<b>OPHERAKIT/01</b> <b>6262-1200</b>	OPHERA BUILDING SERIES 3.5" COLOUR MONITOR VIDEO ENTRY CONTROL KIT	<ul style="list-style-type: none"> <li>- Ophera Building monitor module</li> <li>- HEVC/301GH recessed entry panel</li> <li>- VA301 power supply unit</li> <li>- single KHPS extra push button</li> </ul>



CODE	DESCRIPTION	KIT CONTENTS
<b>LYNEAKIT/00</b> <b>6262-0500</b>	KIT VIDEOCITOFONICO SERIE LYNEA YV MONITOR BIANCO E NERO	<ul style="list-style-type: none"> <li>- YV monitor module</li> <li>- YKP/301GH wall support</li> <li>- HEVC/301GH recessed entry panel</li> <li>- VA301 power supply unit</li> <li>- single KHPS extra push button</li> </ul>
<b>LYNEAKIT/01</b> <b>6262-0600</b>	KIT VIDEOCITOFONICO SERIE LYNEA YVC MONITOR COLORI	<ul style="list-style-type: none"> <li>- YVC monitor module</li> <li>- YKP/301GH wall support</li> <li>- HEVC/301GH recessed entry panel</li> <li>- VA301 power supply unit</li> <li>- single KHPS extra push button</li> </ul>



For item composition options, refer of the general catalogue.



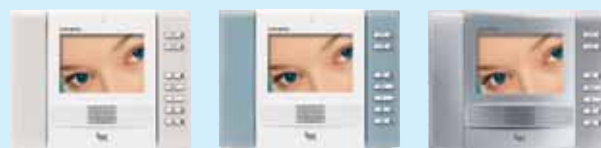
## Nova:

the exclusive flush-mounted model that delights with its modern, no-fuss style and small size. It fits in standard 3- or 6-module boxes



## Ophera:

the new recessed hands-free intercom monitor with 3.5" colour tilting display. Body in white colour. New version available with silver grey body.



## Lynea:

it impresses with its extreme elegance and soft lines in a streamlined housing.



## **X1** Entry panels



For item codes and composition options, refer of the general catalogue.



AUDIO ENTRY FRONT PANEL



VIDEO ENTRY FRONT PANEL



## Targha:

entry panel offering the utmost modularity and functionality. Produced in anodized aluminium, it is easy to install and comes in both flush- and surface-mounted versions. With its small size and colour options (steel and Greyhound light grey), Targha has no trouble blending in with the style of any building.



AUDIO ENTRY FRONT PANEL



VIDEO ENTRY FRONT PANEL



## Targha Digitale:

digital entry panel offering the utmost performance in the smallest possible package. It is an optimal solution for installations with a high number of users and can be flush or surface mounted. The innovative backlit digital pushbutton panel and graphic LCD display help callers locate the user easily.



AUDIO ENTRY FRONT PANEL



VIDEO ENTRY FRONT PANEL



## Targha VR:

very hard-wearing tamperproof entry panel thanks to a stainless steel and polycarbonate front plate 4 mm thick. Its streamlined looks and extremely attractive design make it suitable for any architectural setting.

## X1. High technology cables.

X1 works with all the most popular types of cable: **UTP/5 AWG24**, **CW1308** Telephone cable, double eight 1 mm<sup>2</sup> and Bpt **VCM/1D** twisted pair cable.

With the latest generation of **Bpt** 2 wire systems, performance and signal quality are guaranteed, whatever transmission means is chosen\*.

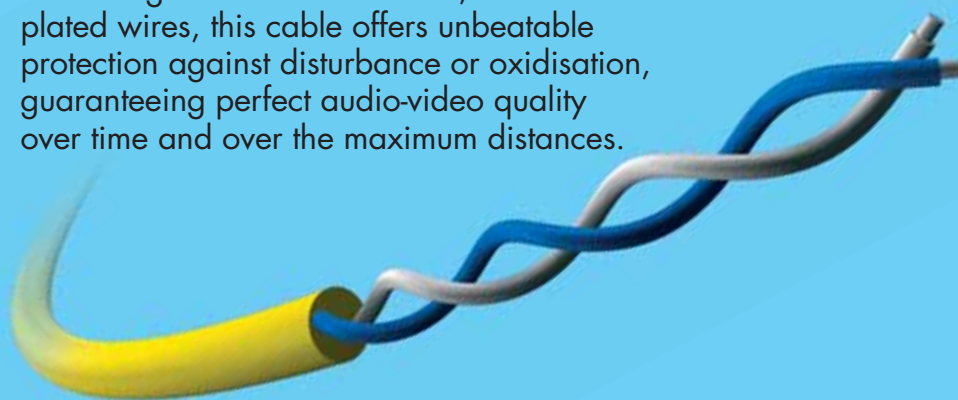



up to **650** meters



### The VCM/1D cable

Consisting of two 1 mm<sup>2</sup> twisted, tin-plated wires, this cable offers unbeatable protection against disturbance or oxidation, guaranteeing perfect audio-video quality over time and over the maximum distances.



BPT CONNECTION CABLES			 VCM/1D
VCM/1D	6282-8000	cable with 2 1 mm <sup>2</sup> tin-plated wires in 100m reels	
VCM/1D/500	6282-8100	cable with 2 1 mm <sup>2</sup> tin-plated wires in 500m reels	
VCM/2D	6282-3300	cable with 2 wires + twisted pair in 100m reels	
VCM/2D/500	6282-3400	cable with 2 wires + twisted pair in 500m reels	


(\*) The maximum distances reachable vary according to the number of receivers connected and the maximum absorption of the system. The use of wires with different characteristics from those recommended will not guarantee the declared specifications; hence, we highly recommend the above mentioned cable.




# Product codes




LYNEA SERIES		
YKP/301	6282-7900	Video entry control system with wall support for video modules YV and YVC
YV	6210-9200	4,5" b/w monitor module, in white, wall installation
YVC	6210-9300	3,5" colour monitor, in white, wall installation
YAL	6181-8100	Supplementary call loudspeaker
YP3	6181-7900	Expansion call kit (3 push buttons)
YPL	6181-8000	Interrupter Kit with lighted indicator and call volume control
YKT/F	6282-5900	Table-top kit for YV+YKP/301, consisting of base and cable with RJ45 plug without socket
NOVA SERIES		
NC/321 GR	6053-1400	Twin-channel receiver module, in grey
NC/321 BB	6053-1300	Twin-channel receiver module, in white
NVM/301 GR	6215-1200	2" LCD colour monitor module, in grey
NVM/301 BB	6215-1100	2" LCD colour monitor module, in white
NS/61	6282-8200	NVM/301 kit + NC/321 for 6-module recessed boxes
NST/61	6282-8300	Table-top kit for Nova
OPHERA		
OPHERA	6211-6600	3,5" colour monitor, twin-channel, flush mounted with 3 interchangeable coloured covers and PHI recessed box, body in white colour
OPHERA/B	6211-6700	3,5" colour monitor, twin channel, flush mounted with 'privacy' option (in the 'Building' version) with 3 interchangeable coloured covers and PHI recessed box, body in white colour
OPHERA SV	6282-7000	3,5" colour monitor, twin-channel, flush mounted with 3 interchangeable coloured covers and PHI recessed box, body in silver grey colour
OPHERA/B SV	6282-7100	3,5" colour monitor, twin channel, flush mounted with 'privacy' option (in the 'Building' version) with 3 interchangeable coloured covers and PHI recessed box, body in silver grey colour
PHI	6282-8400	Recessed box




YVC



YKP/301




NVM/301GR + NC/321GR




OPHERA

POWER SUPPLIERS		
VA/301	6270-4600	230V 50/60Hz Supplier, 12 DIN units low profile module
AS/200	6140-4100	230V 15VA Supplier, 4 DIN units low profile module
VAS/100.20	6270-3300	230V 60VA Supplier, 12 DIN units low profile module
XAS/301	6270-4700	230V additional supplier for signal regeneration




VA/301


VIDEO DISTRIBUTORS		
XDV/304	6282-1300	Video distributor with 4 miniaturized outputs. Size: 60x44x16 mm
XDV/300A	6282-2000	Miniaturised video amplifier. Size: 60x44x16mm
XDV/304A	6282-5800	Video distributor with 4 amplified outputs. 6 DIN units low profile module
SELECTORS		
VSE/301	6274-7400	Selector for intercom systems, integrated power supply, 8 DIN units low profile module
RELAY UNITS		
VLS/101	6281-6200	Relay unit, 4 DIN units module
VLS/400	6281-5800	Relay unit, 4 DIN units module
VLS/300	6282-5400	Remote actuator
OTHER UNITS		
AC/300	6181-7600	Call adaptor
IAV/300	6282-5700	Audio visual interface, 230V ca 50/60Hz power supply
RC/300	6181-7500	Call Repeater



XDV/304




XDV/304A



XDV/300A



CONNECTION CABLES		
VCM/1D	6282-8000	2 1mm tin-plated wires in reels of 100m
VCM/1D/500	6282-8100	2 1mm <sup>2</sup> tin-plated wires in reels of 500m
VCM/2D	6282-3300	2 wires + twisted pair in reels of 100 m
VCM/2D/500	6282-3400	2 wires + twisted pair in reels of 500 m






VCM/1D



For item codes and composition options, refer of the general catalogue.

# X1 Product codes

ENTRY PANELS IN THE TARGHA SERIES			 HEV/301 ST   HEV/301 GH
HEC/301 ST	6009-5400	Intercom entry panel with 1 push button, in steel	
HEC/301 GH	6009-9200	Intercom entry panel with 1 push button, in light grey	
HEP/306 ST	6009-5200	Entry panel with 6 push buttons, in steel	
HEP/306 GH	6009-9300	Entry panel with 6 push buttons, in light grey	
HEP/312D ST	6009-5300	Entry panel with 12 push buttons, in steel grey	
HEP/312D GH	6009-9400	Entry panel with 12 push buttons, in light grey	
HEV/301 ST	6202-1000	Video intercom entry panel with 1 push button, b/w CCTV, in steel	
HEV/301 GH	6202-3800	Video intercom entry panel with 1 push button, b/w CCTV, in light grey	
HEVC/301 ST	6202-1200	Video intercom entry panel with 1 push button, colour CCTV, in steel	
HEVC/301 GH	6202-3900	Video intercom entry panel intercom monitor with 1 push button, colour CCTV, in light grey	
HET/301 ST	6202-1100	Video intercom entry panel with 1 push button, external CCTV, in steel	
HET/301 GH	6202-4000	Video intercom entry panel with 1 push button, external CCTV, in light grey	

DIGITAL ENTRY PANELS			 HAC/300LR GH
HAC/X2LR	6202-8400	Interface module for digital entry pane	
HAC/300LR ST	6009-5100	Digital entry panel with name file, in steel	
HAC/300LR GH	6009-9100	Digital entry panel with name file, in light grey	
HAC/300LR VR	6009-7400	Digital entry panel with name file, tamperproof version	

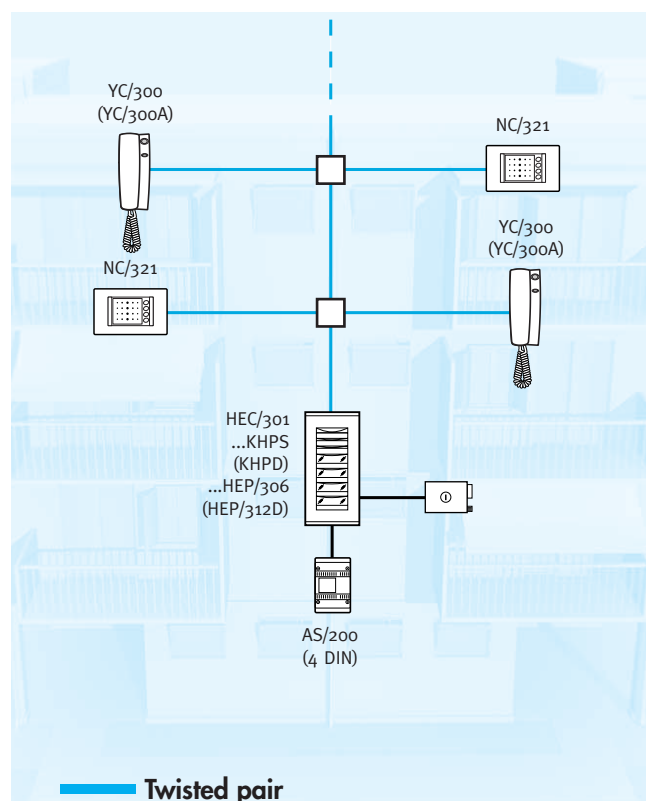
TAMPERPROOF ENTRY PANELS			 HEV/302VR   HEP/306VR
HEC/301 VR	6009-6700	Entry panel with 1 push button	
HEC/302 VR	6009-6800	Entry panel with 2 push buttons	
HEC/303 VR	6009-6900	Entry panel with 3 push buttons	
HEC/304 VR	6009-7000	Entry panel with 4 push buttons	
HEP/306 VR	6009-7100	Entry panel with 6 push buttons	
HET/301 VR	6202-2000	Entry panel for external CCTV with 1 push button	
HET/302 VR	6202-2100	Entry panel for external CCTV with 2 push buttons	
HET/303 VR	6202-2200	Entry panel for external CCTV with 3 push buttons	
HET/304 VR	6202-2300	Entry panel for external CCTV with 4 push buttons	
HEV/300 VR	6202-1400	Video intercom entry panel with no push buttons and b/w CCTV	
HEV/301 VR	6202-1500	Video intercom external entry panel with 1 push button and b/w CCTV	
HEV/302 VR	6202-1600	Video intercom entry panel with 2 push buttons and b/w CCTV	
HEVC/300 VR	6202-1700	Video intercom entry panel with no push buttons and colour CCTV	
HEVC/301 VR	6202-1800	Video intercom entry panel with 1 push buttons and colour CCTV	
HEVC/302 VR	6202-1900	Video intercom entry panel with 2 push buttons and colour CCTV	

ACCESSORIES			 HBP/T   KHPS
HBP/M	6009-7500	Metal wall box	
HBP/T	6010-1800	Targha metal wall box in painted steel	
HTS GR	6009-0600	Frame and wall box, in grey	
HTS GH	6010-1700	Frame and wall box, in light grey	
HTI	6009-9600	Wall box, in light grey	
HTS VR	6009-6600	Reinforced tamperproof wall box	
HTT	6009-9700	Front plate recessed frame, in light grey	
KHPS	6181-4100	Single push button kit	
KHPD	6181-4200	Double push button kit	
KHSO	6181-6500	'Busy' kit – takes up the space of a push button	
KHIN	6181-6400	Information kit – takes up the space of two push buttons	
VZS/308C	6282-2400	Coded interface for 8 additional push buttons	

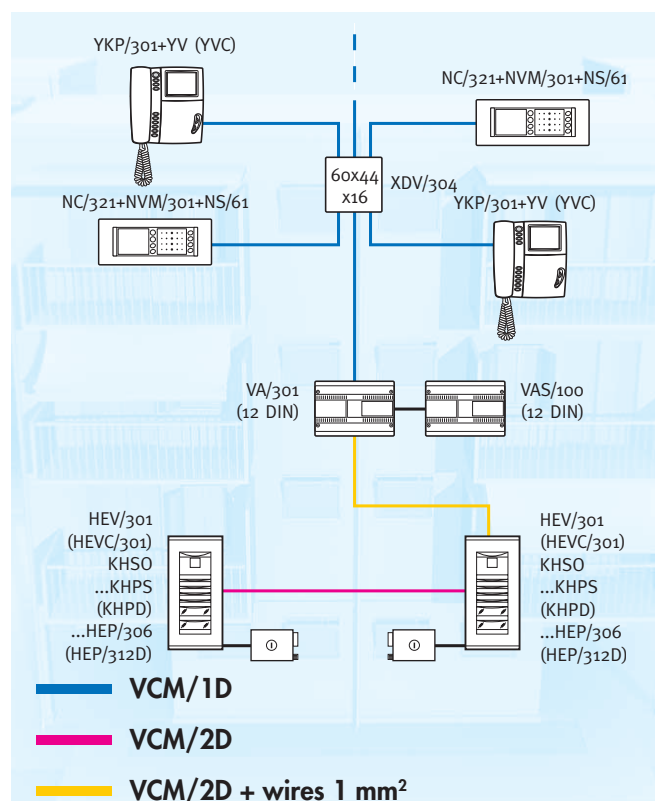
# Audio-only and audio-video system diagrams



Multi family audio-only system with individual receivers featuring handsets, hands-free function and 1 entry panel.



Audio-Video entry installation with 2 entry panels with traditional push buttons and one video riser with more than 8 video receivers.



AUDIO ENTRY INSTALLATIONS				
	NUMBER OF ENTRY PANELS			
	1	2	3	4
From 1 to 64 handsets with button front plate	n.1 AS/200	n.2 AS/200 or n.1 VAS/100.20	n.3 AS/200 or n.1 VAS/100.20 + n.1 AS/200	n.4 AS/200 or n.2 VAS/100.20

Summary table giving the number of power supply units required based on the number of entry panels and number of receivers.

System composition	
Article	Quantity
YC	2-n
NC/321	2-n
AS/200	1
HEC/301	1
KHPS	0-3
HEP/306	0-n
KHPD	0-n
HEP/312D	0-n

VIDEO ENTRY INSTALLATIONS				
1 VA/301 included	NUMBER OF ENTRY PANELS			
	1	2	3	4
From 1 to 64 monitors with button front plates	n.0	VAS/n.1/100.20	VAS/n.1/100.20	VAS/n.2/100.20

Summary table giving the number of VAS/100.20 power supply units required based on the number of entry panels and number of receivers.

System composition	
Article	Quantity
YV (YVC)	2-n
YKP/301	2-n
NVM/301	2-n
NC/321	2-n
NS/61	2-n
XDV/304	1-n
XDV/300A*	1-2
VAS/100	1
VA/301	1
HEV/301 (HEVC/301)	2
KHSO	2
KHPS	0-2
HEP/306	0-n
KHPD	0-n
HEP/312D	0-n

\* to be installed after 10 XDV/304



Bpt S.p.A. reserves the right to modify the information in this document at any time.

[WWW.BPT.IT](http://WWW.BPT.IT)



**BPT SpA**  
Via Roma, 41  
30020 Cinto Caomaggiore (VE)  
Tel. +39 0421/241241  
Fax +39 0421/241053

Head office:  
Via Stazione, 26  
33079 Sesto al Reghena (PN)  
[info@bpt.it](mailto:info@bpt.it)

Company subject  
to management  
and coordination  
of the BCOMPANY S.p.A.  
Reg. in R. of B. 02266190301